



EGS



Planning aids and basic knowledge

Device systems

Building Connections





Contact
Customer Service
+49 23 71 78 99 - 20 00

Service times
Monday to Friday 09.00 to 18.00









+49 23 71 78 99 - 25 00

info@obo.de
www.obo.de





Contents of planning and mounting aids

	Modul 45® – devices	6
	Modul 45® – device installation solutions for surface and concealed mounting	8
	Modul 45® and standard installation solutions for device installation ducts and service poles with an 80 mm system opening	18
	Modul 45connect® – plug-in installation solutions for device installation ducts and service poles	28
	Modul 45connect® – plug-in installation solutions for raised and cavity floor	42
	Workplace solutions – Deskboxes and Flexkanal	58
	Modul 45® and standard – Suspended power supply units VH / VHF	72
	Additional information	84



Surface-mounted housing



Modul 45® – device installation solutions for surface and concealed mounting

The Modul net system is designed for the installation of Modul 45 devices and can be used for surface-mounted or cavity wall installations. The installation housing, which has a modular structure, can also be easily adjusted to the required number of installation devices. The basic configuration offers space for 4 Modul 45 installation devices. The housing can be expanded as required using an expansion module for 2 Modul 45 installation devices.

For installations in cavity walls, matching cavity wall supports and screen frames are available as accessories. Installations with 4 devices (2x 2x) and 6 installation devices (3x 2x) are possible.

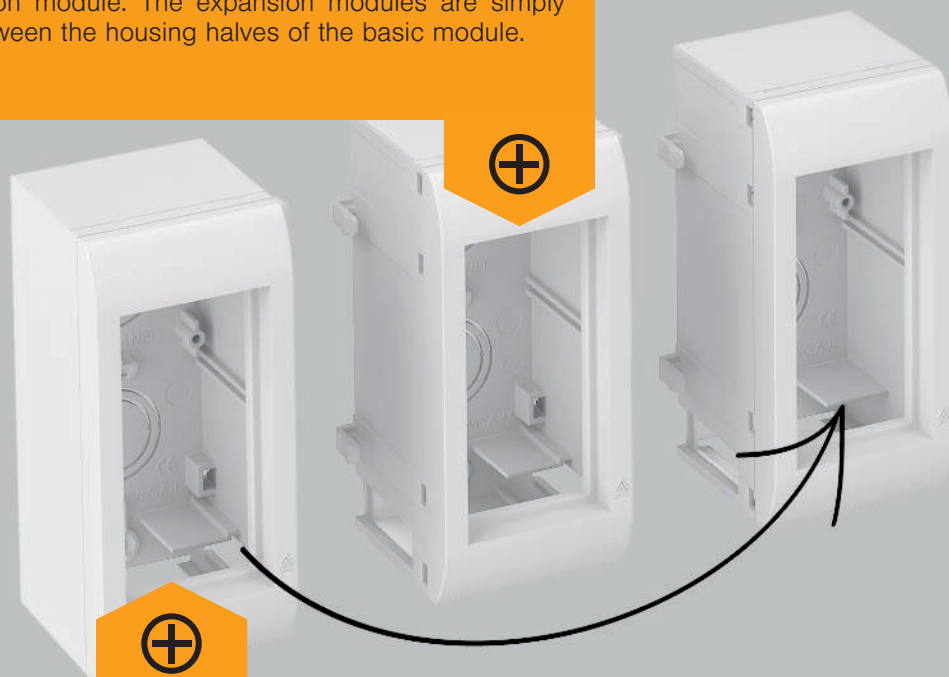


Cavity wall installation



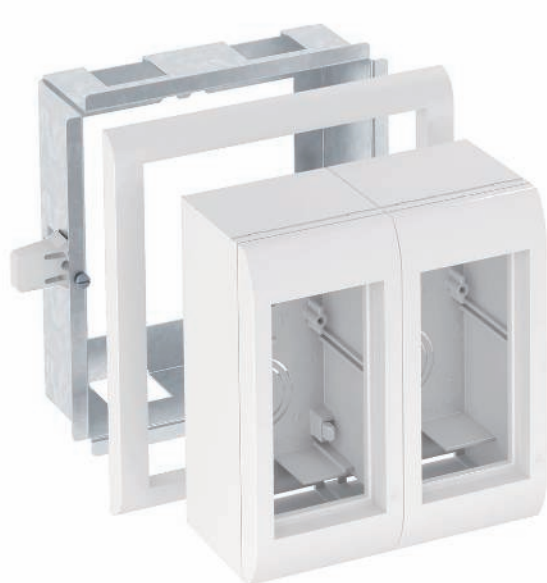
Expansion module

The installation housing can be expanded as required using the expansion module. The expansion modules are simply inserted between the housing halves of the basic module.

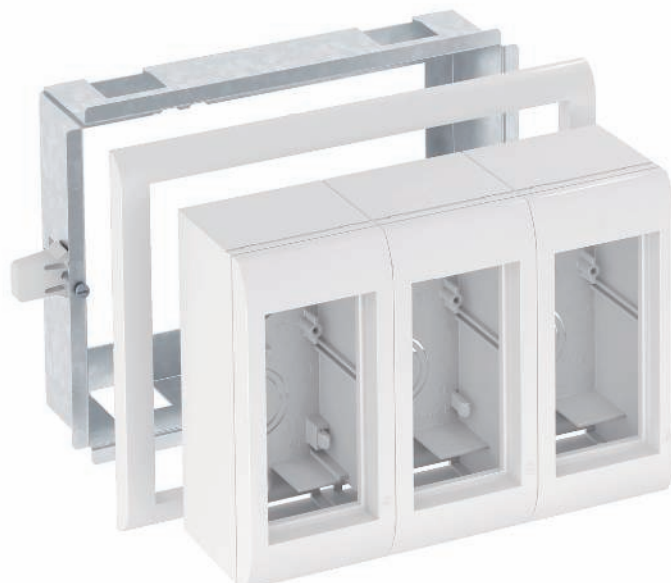


Basic configuration

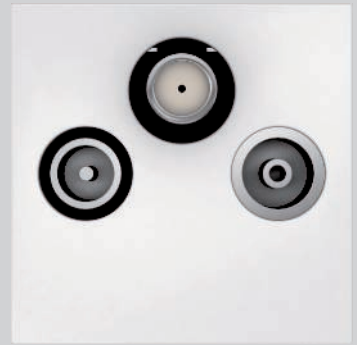
The basic module consists of a right- and a left-hand housing half, which are simply interlocked.



Double



Triple



Modul 45® – devices

With their dimensions of 45 x 45 mm, the Modul 45 devices from OBO Bettermann are compact and space-saving. For this reason, the sockets, data and multimedia technology connections are ideal for use in under-floor systems, device installation ducts and service poles. The Modul 45 system makes optimum use of limited installation space.

The advantages of Modul 45 at a glance:

- Space savings thanks to compact design
- Modular structure
- Quick and easy planning
- Easy mounting
- High efficiency due to time and cost savings
- Wide range of application options
- Easy exchangeability

Installation in floor boxes

Installation in
device installation ducts



Installation in
service poles

Modul 45® devices

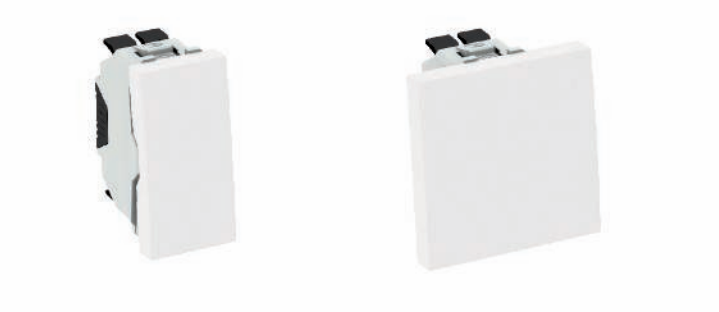
Modul 45®
Protective contact and earthing pin sockets



Modul 45®
Country-specific sockets



Modul 45®
Switching and protection devices



Modul 45®
Data technology



Modul 45®
Multimedia technology





Modul 45®

One system – many solutions

The Modul 45 devices from OBO Bettermann offer the right solution for every application – no matter whether you're dealing with sockets, data or multimedia technology.

- Multiple sockets for economic device installation
- Sockets for international applications
- Modul 45connect sockets for quick, secure installation
- Data technology supports for data modules of different manufacturers
- Multimedia connection solutions for data, video and audio transmission

Modul 45®

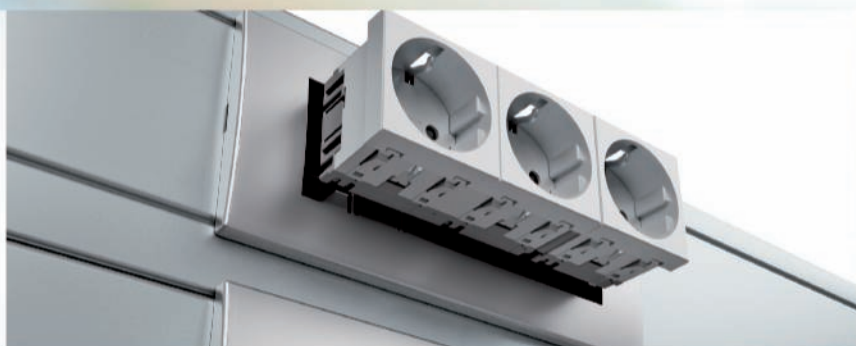
One system
All kinds of applications



Modul 45® in the Rapid 45 device installation duct



Modul 45® in the Rapid 80 device installation duct



Modul 45® in under-floor service units and cassettes



Modul 45® in under-floor floor sockets and floor boxes



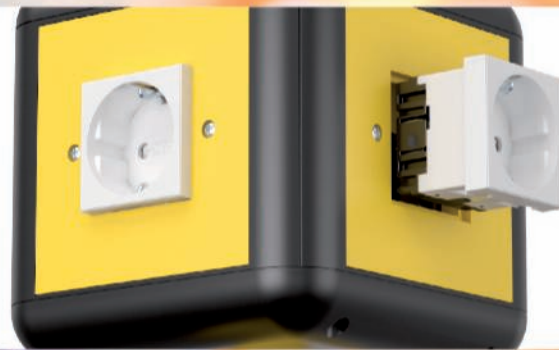
Modul 45® in the Modal net surface-mounted housing



Modul 45® in the Modal net cavity wall installations



Modul 45® in suspended power supply units



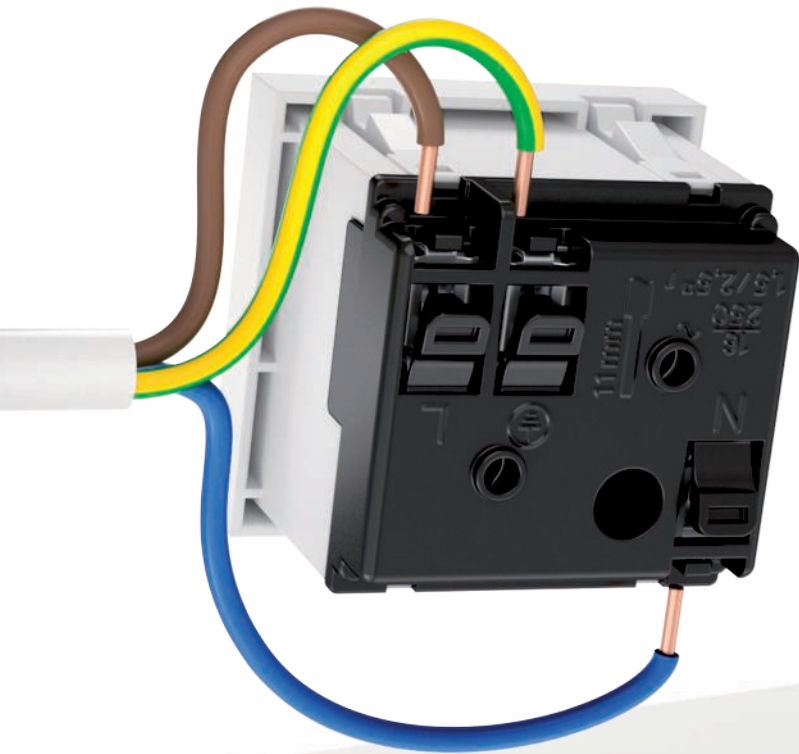
Modul 45® in industrial service poles



Modul 45® in service poles



Push in. Lock. And that's it.
Work faster with Modul 45® devices



Connection of Modul 45® sockets

The screwless terminals correspond to IEC 60884-1 and are suitable for the connection of rigid cables of 1.5 to 2.5 mm². Each screwless terminal can accept two conductors.



07_EGS/en / 2019/06/18 11:21:02 (LLExpert_02605) / 2019/06/18 11:21:33 11:21:33

Multiple sockets



The multiple sockets, in the double and triple versions, are particularly economic and time-saving during installation. In a standard installation, the wiring of the individual sockets takes a lot of time. This time is not required at all when installing the multiple sockets.



Time saved

The integrated screwless terminals and the tried-and-trusted locking fastening allow toolless mounting. The wide range of country-specific sockets offers the right solution for any system environment.

Modul 45® data and multimedia technology

Today, we cannot picture offices without a data network. Flexible cabling solutions and data connection modules are used with increasing frequency. OBO can offer various data connection modules, both with and without shielding: Cat. 5e, Cat. 6 and Cat. 6a. The data connection modules are simply snapped into the Modul 45 data technology support.

With the multimedia connection solutions, computer, video and audio connections can be installed in the different OBO system environments. No matter whether in the GES service unit, in cassettes or in System 55 – with the Modul 45 support plate, mounting is easy and quick.

Practical connection solutions

We have the right connection solution for every connection type: Whether you are routing pre-terminated cables or conventional installation cables.

- Solder connection or screw connection for conventional cable connections
- Connection cable or 1:1 coupling to connect pre-terminated cables





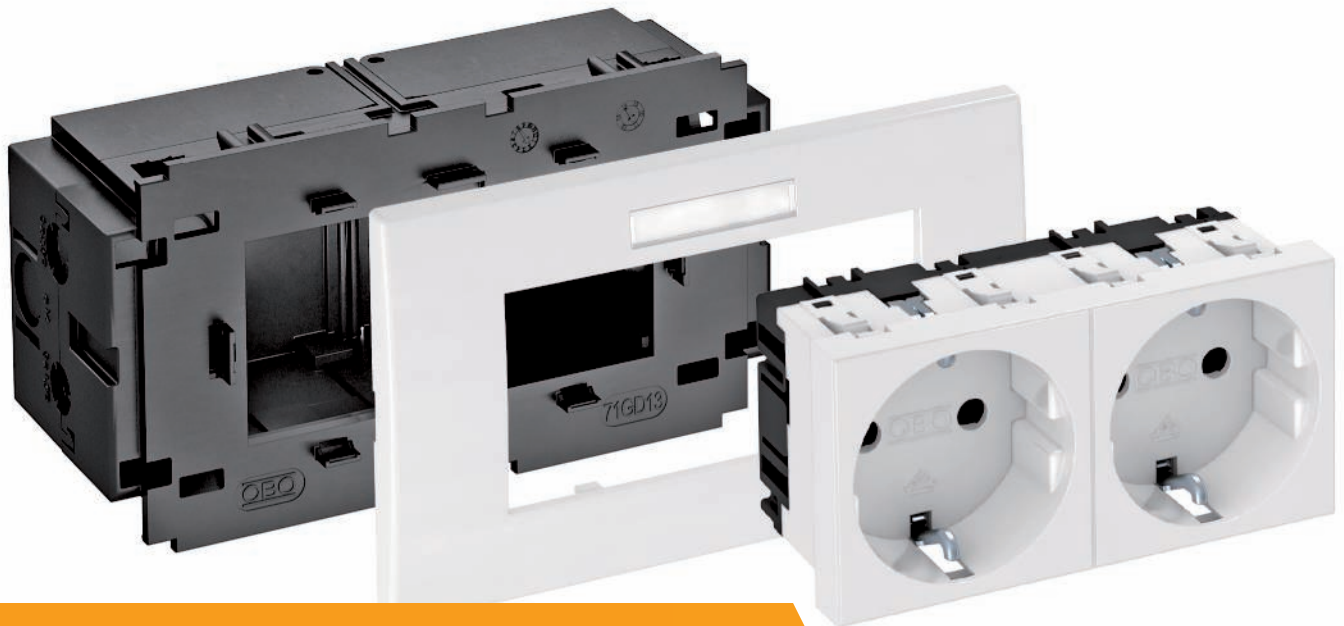
Modul 45® data technology support

A large selection of different data technology support is available for the installation of the connection modules. In so doing, data technology supports of other manufacturers can be installed.



Integrated dust protection

Integrated dust protection flaps cover the data connection modules when unused. They protect them against dust and other outside influences. During use of the data socket, the dust protection flaps are pushed upwards. After the connection cables have been removed, the dust protection flaps close again automatically.



Modul 45[®] and standard – installation solutions for device installation ducts and service poles with 80 mm system opening

The Modul 45 devices from OBO Bettermann are compact and space-saving. They are therefore ideal for use in device installation ducts and service poles. The Modul 45 system makes optimum use of limited installation space.

The advantages of Modul 45 at a glance:

- Space savings thanks to compact design
- Modular structure
- Quick and easy planning
- Simple mounting
- High efficiency due to time and cost savings
- Wide range of application options
- Easy exchangeability



Rapid 80

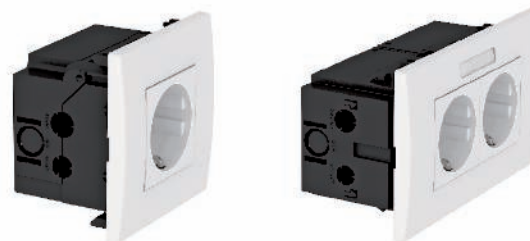
Service poles



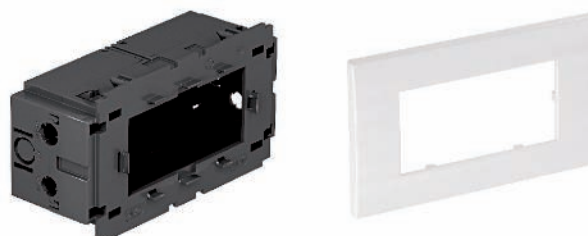
37_EGS / en / 2019/06/18 11:21:02 / FILE-port_02605 / 2019/06/18 11:21:33 / 1:33

Rapid 45

Sockets
and installation units



Installation material
for Modul 45® devices



Sockets and switching devices
Modul 45®

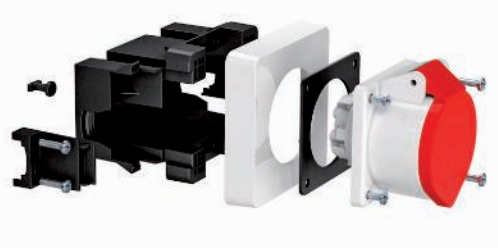


Data and multimedia
technology Modul 45®



Installation material
for standard devices





One system, many options

The Modul 45 devices from OBO Bettermann offer the right solution for every application – no matter whether you're dealing with sockets, data or multimedia technology.

- Multiple sockets for economic device installation
- Sockets for international applications
- Modul 45connect sockets for quick, secure installation
- Data technology supports for data modules of different manufacturers
- Multimedia connection solutions for data, video and audio transmission



Modul 45[®] in Rapid 45 device installation trunking

Modul 45 devices are engaged directly in the trunking without additional components. The installation opening of the Rapid 45 trunking is matched to the whole range of Modul 45 devices and thus offers flush installation.





Modul 45[®] in Rapid 80 device installation trunking

Modul 45 devices are inserted in accessory mounting boxes with cover frames in the Rapid 80 trunking. This also allows the benefits of the Modul 45 devices to be integrated in the standard device installation trunking with matched design.



Modul 45® in ISS service poles

Modul 45 devices are also suitable for vertical installation in service poles. Installation is comparable with device installation in the device installation trunking: Either direct installation in the profile or using accessory mounting boxes with cover frame.



Service poles
in office environments





07_EGS / en / 2019/06/18 11:21:02 (LL.Export_02805) / 2019/06/18 11:21:33 11:21:33



Service poles
in industrial environments

Device installation in 80 mm trunking systems

The use of device installation sockets and mounting supports with Modul 45 devices consistently continues the concept of toolless mounting.

The labelling panel can be snapped directly onto the accessory mounting box and thus remains intact, even with retroinstallations at the installation location.

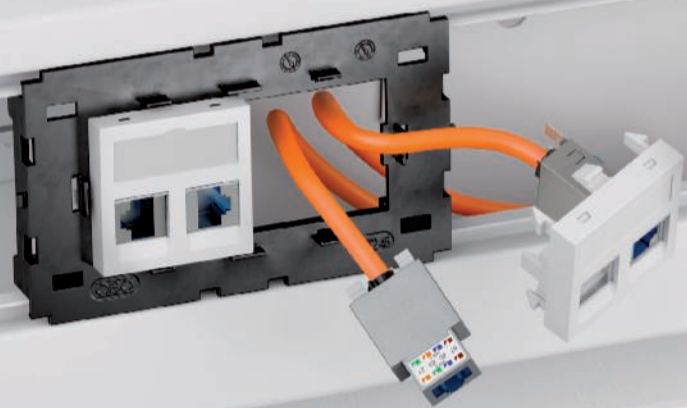
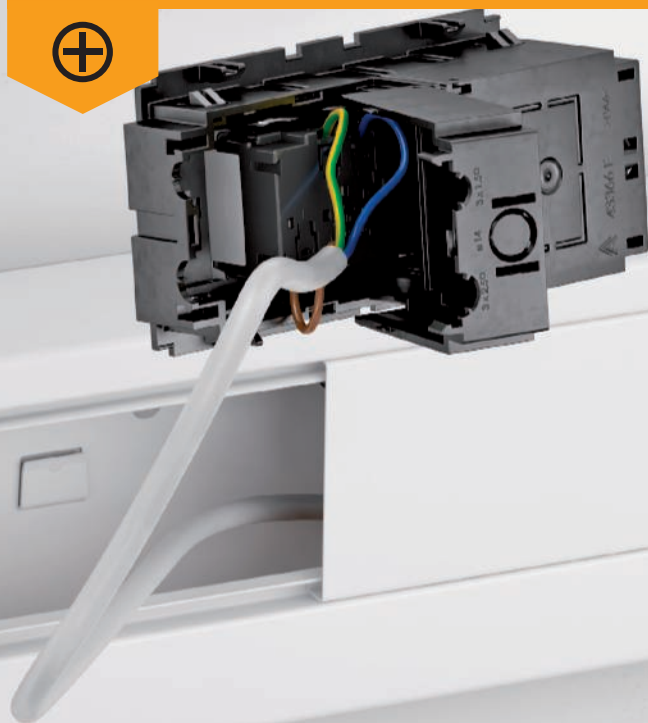


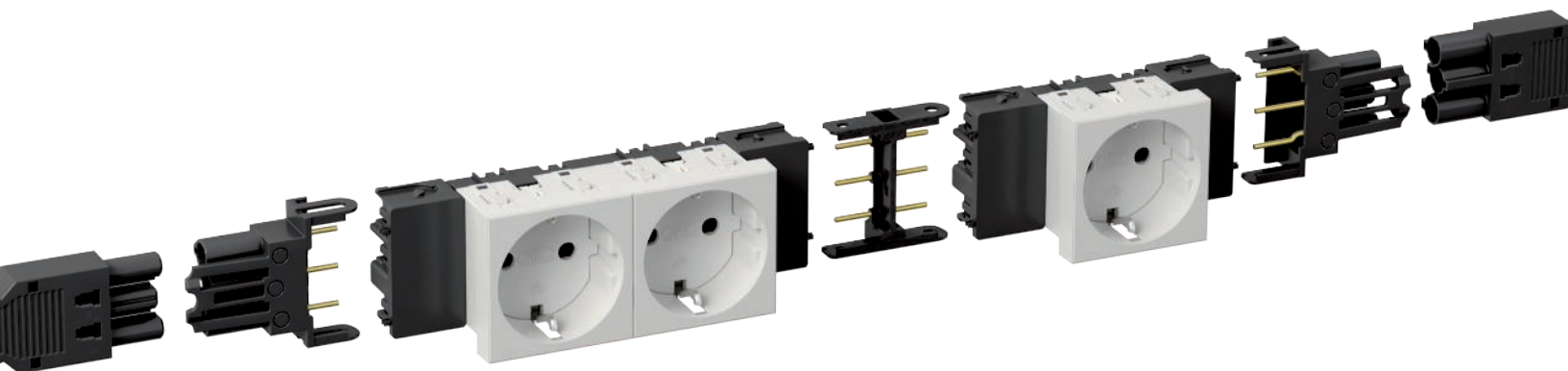
Socket installation in accessory mounting box

Appropriate single, double and triple accessory mounting boxes are available for all Modul 45 socket units. Cable connection and strain relief occur after engagement of the sockets through the accessory mounting boxes, which are opened from the rear.

Data and multimedia installation in mounting supports

Single, double and triple mounting supports are available for the installation and combination of data and multimedia connections. The open mounting support allows installation with increased bend radii. As with the accessory mounting box, the cover plates are simply snapped onto the mounting support.





Modu 45connect® – Plug-in installation solutions for device installation ducts and ser- vice poles

As continuously connectable installation technology, Modu 45connect for device installation ducts and service poles offers the highest level of flexibility, security and cost efficiency.

From energy distribution through to device connection in the ducts, the system offers all the required installation components.



Rapid 45

Rapid 80

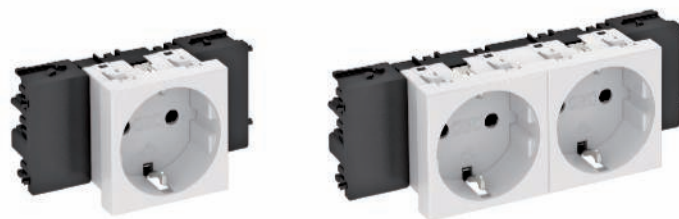


Service pole

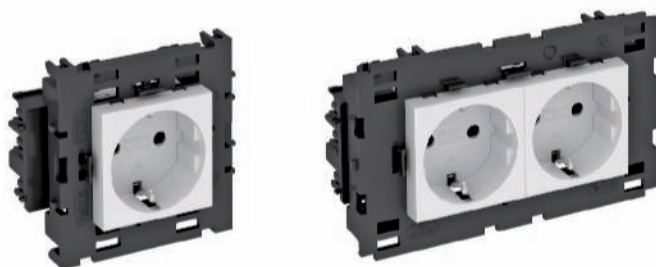


Sockets Modul 45connect® + installation accessories

Sockets 0° for Rapid 45



Sockets 0° for Rapid 80



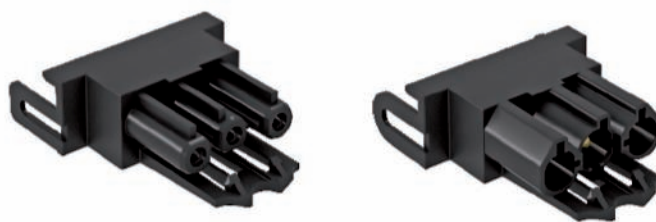
Sockets 33° for service poles



Device installation material for Rapid 80 and service poles



Connection and adapter

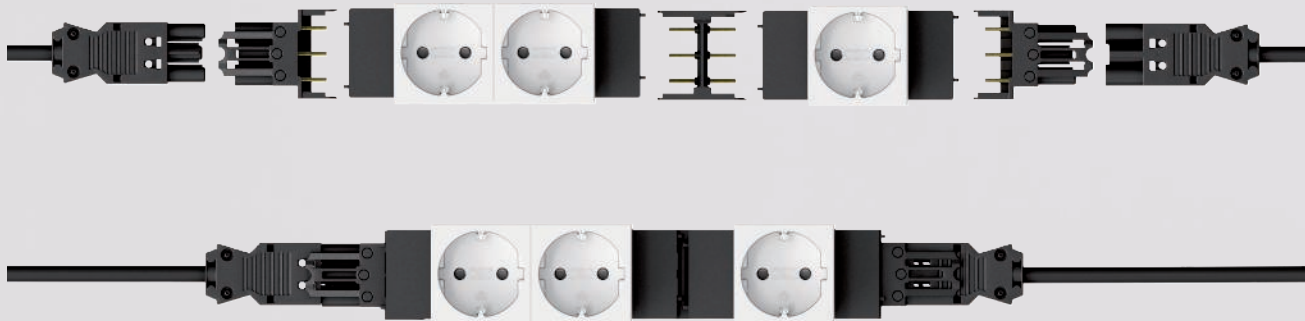


Installation accessories and connection cables





Modul 45connect® in the Rapid 45 trunking



Device installation in the Rapid 45 device installation trunking

Rapid 45 trunking is marked by a slender design. It is ideally matched for direct installation of the Modul 45 range for sockets, data and multimedia installations.

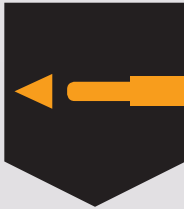




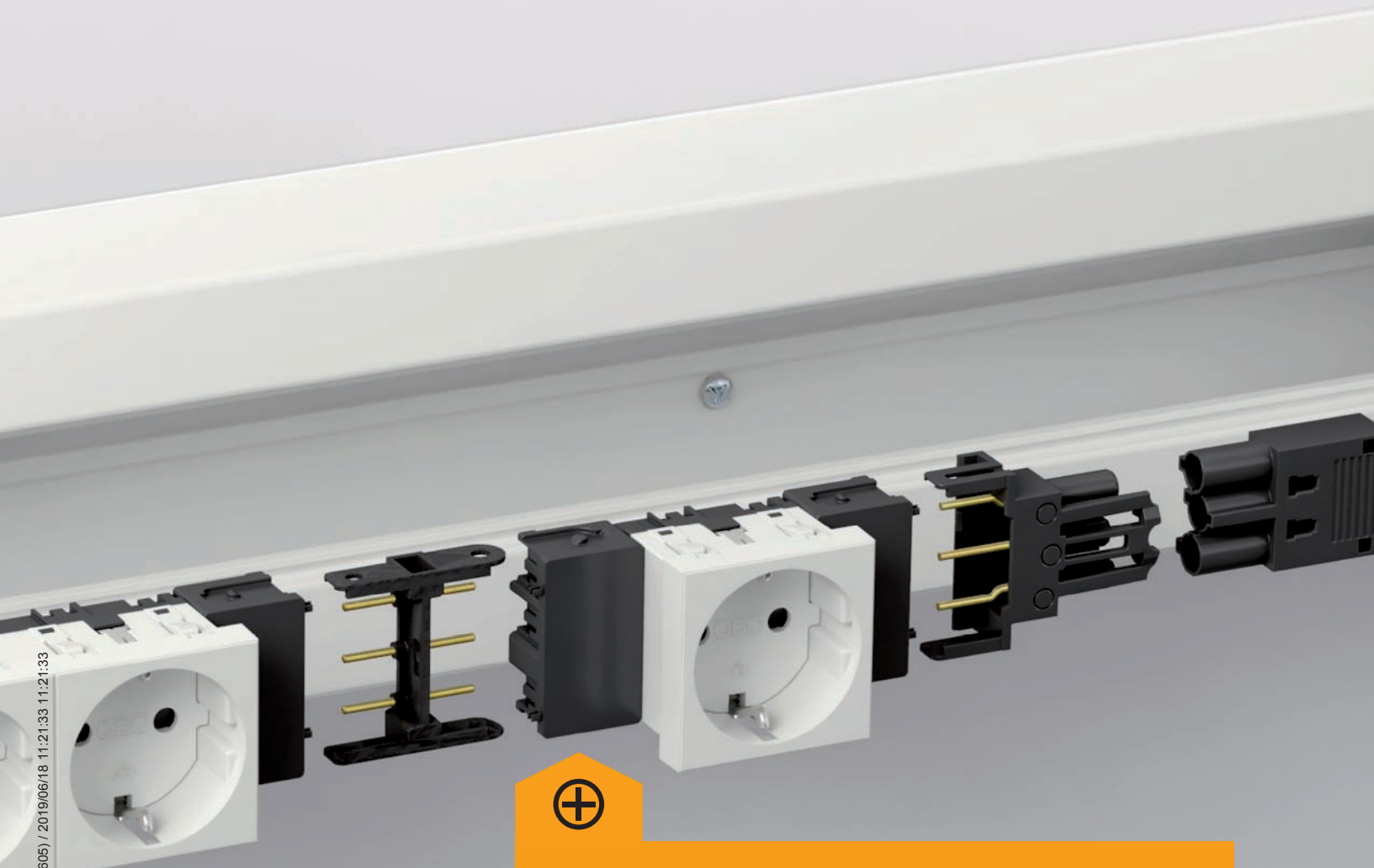
Rapid and toolless installation through Modul 45connect



Safe installation through encoded connection technology



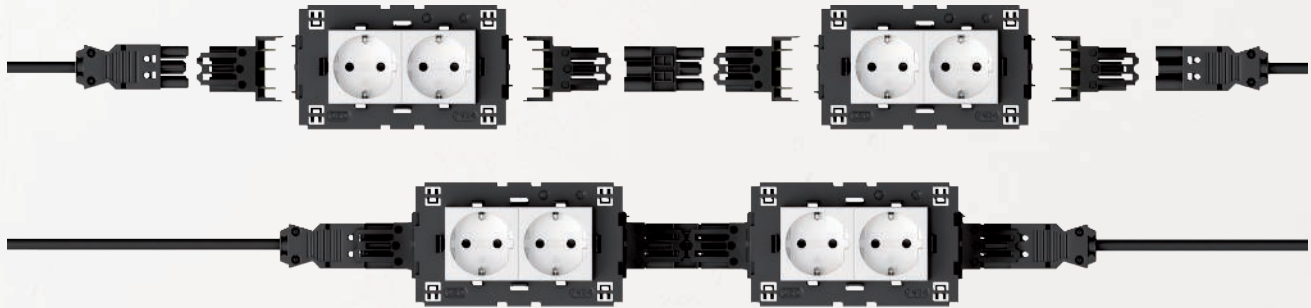
Direct mounting in the trunking – without additional components



Sockets 0° – Connect 45

Modul 45 connect 0° sockets are inserted in the Rapid 45 trunking with a front-side connection. This allows the toolless installation of connected sockets in the trunking profile. Connection adapters with integrated strain relief are specially available for use in Rapid 45.

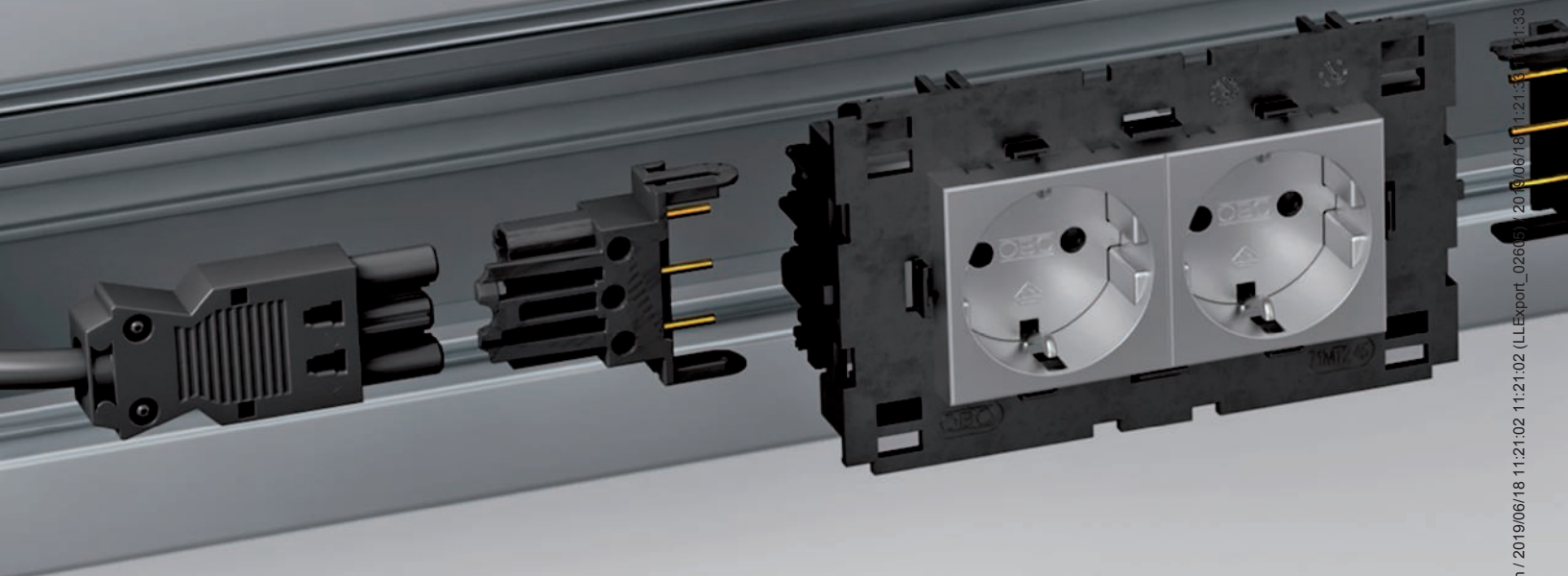
Modul 45connect® in the Rapid 80 trunking



Device installation in the Rapid 80 device installation trunking

Rapid 80 trunking offers large trunking openings for device installation and sufficient space for large cable volumes.

The Modul 45 product range for sockets, data and multimedia installation is installed in the Rapid 80 trunking using accessory mounting boxes.



07_EGS/en/2019/06/18 11:21:02 (LLEExport_02665) 2019/06/18 11:21:33



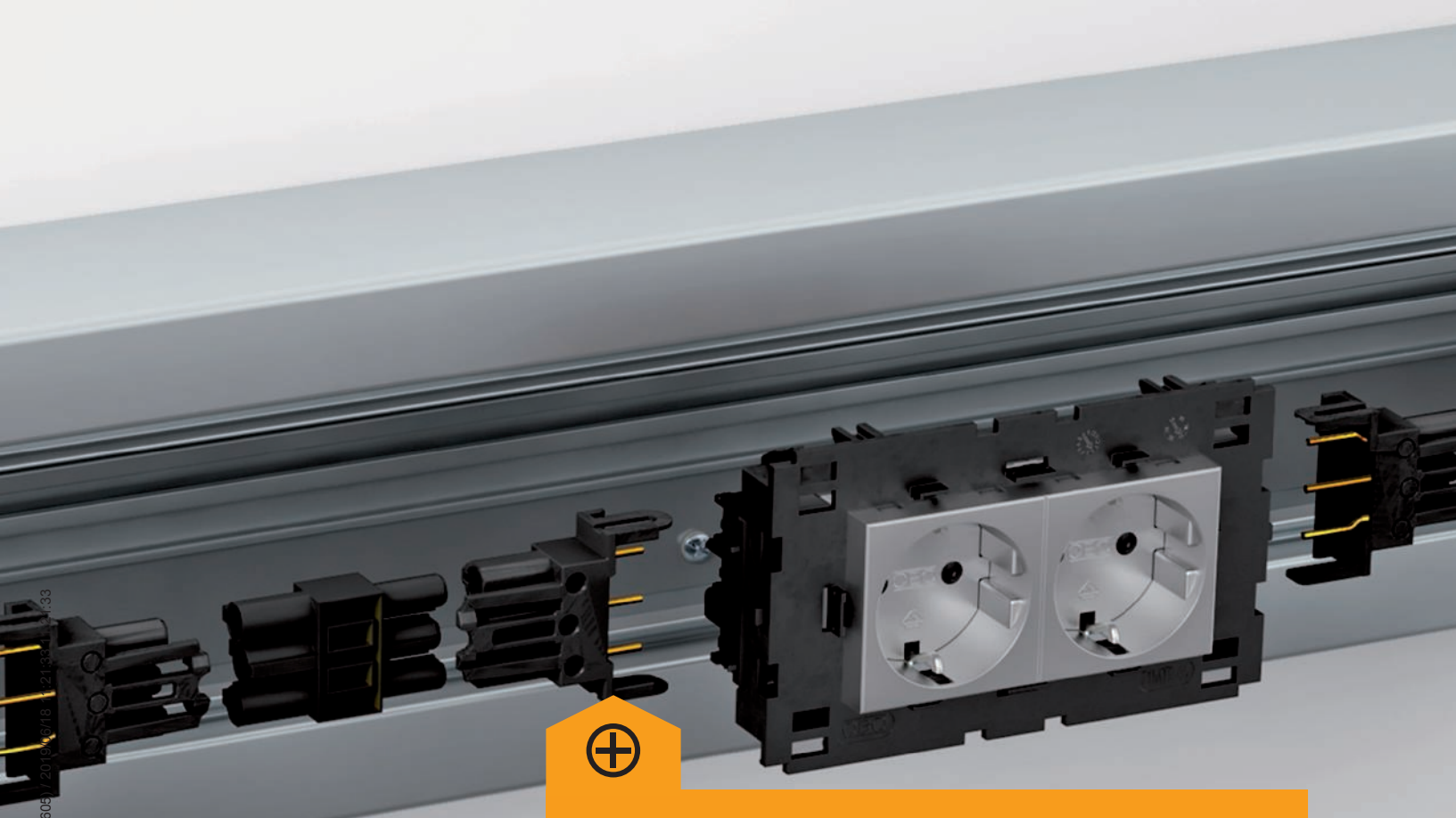
Rapid and toolless installation through Modul 45connect



Safe installation through encoded connection technology



Direct mounting in the trunking – without additional components



Sockets 0° – Connect 80

In Rapid 80, Connect 80 sockets are offered as a unit with an installation frame. The 0° Connect sockets are installed with a connection adapter with integrated strain relief.

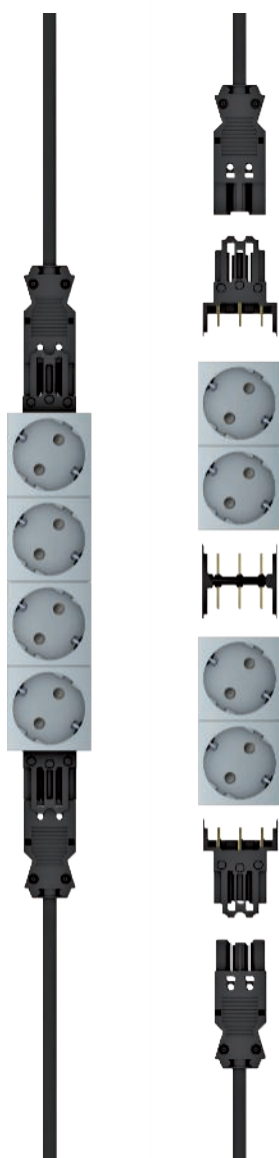
This allows continuous, plug-in installation technology – there is no need for the conventional connection of sockets.

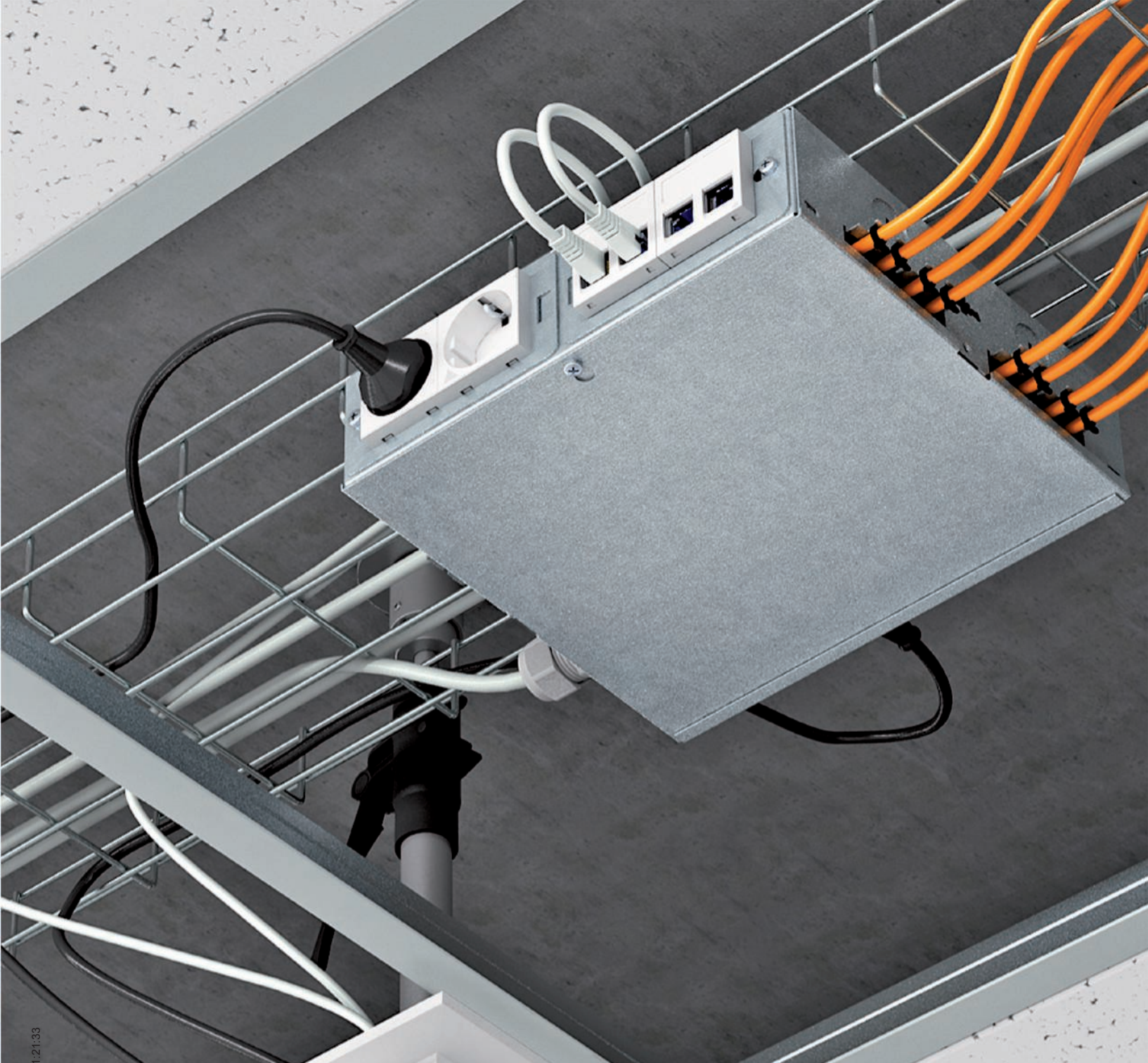
Modul 45connect® in service poles

Service poles offer direct access to the installation technology at the workplace. Service poles with 45 and 80 mm installation openings are offered.

Sockets 33° – Connect 45

Modul 45 connect 33° sockets are inserted in service poles with a front-side connection. These 33° Connect sockets can be arranged without gaps using connection adapters. Connection adapters with integrated strain relief are specially available for use in service poles.

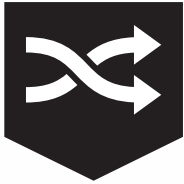




Energy distribution via Consolidation Point

Consolidation Points are positioned centrally in the false ceiling and allow the supply of multiple service poles from the ceiling.

This solution allows the distribution of power, data and multimedia.



Rapid and toolless installation through Modul 45connect



Safe installation through encoded connection technology



Direct mounting in the trunking – without additional components



Reduction of the fire load

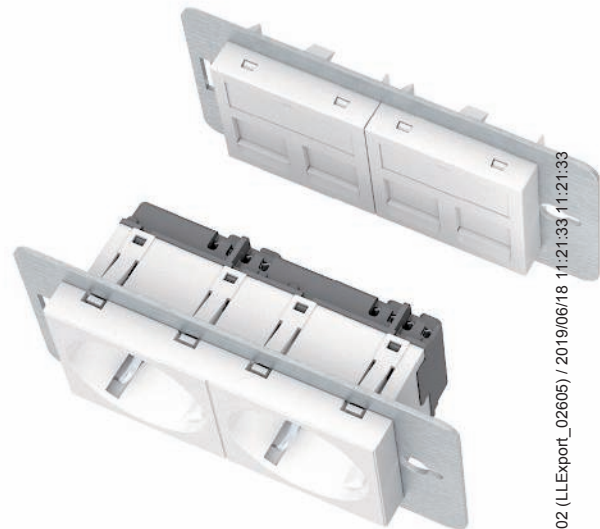


Consolidation Points offer a high level of flexibility and combination options for power, data and multimedia connections.

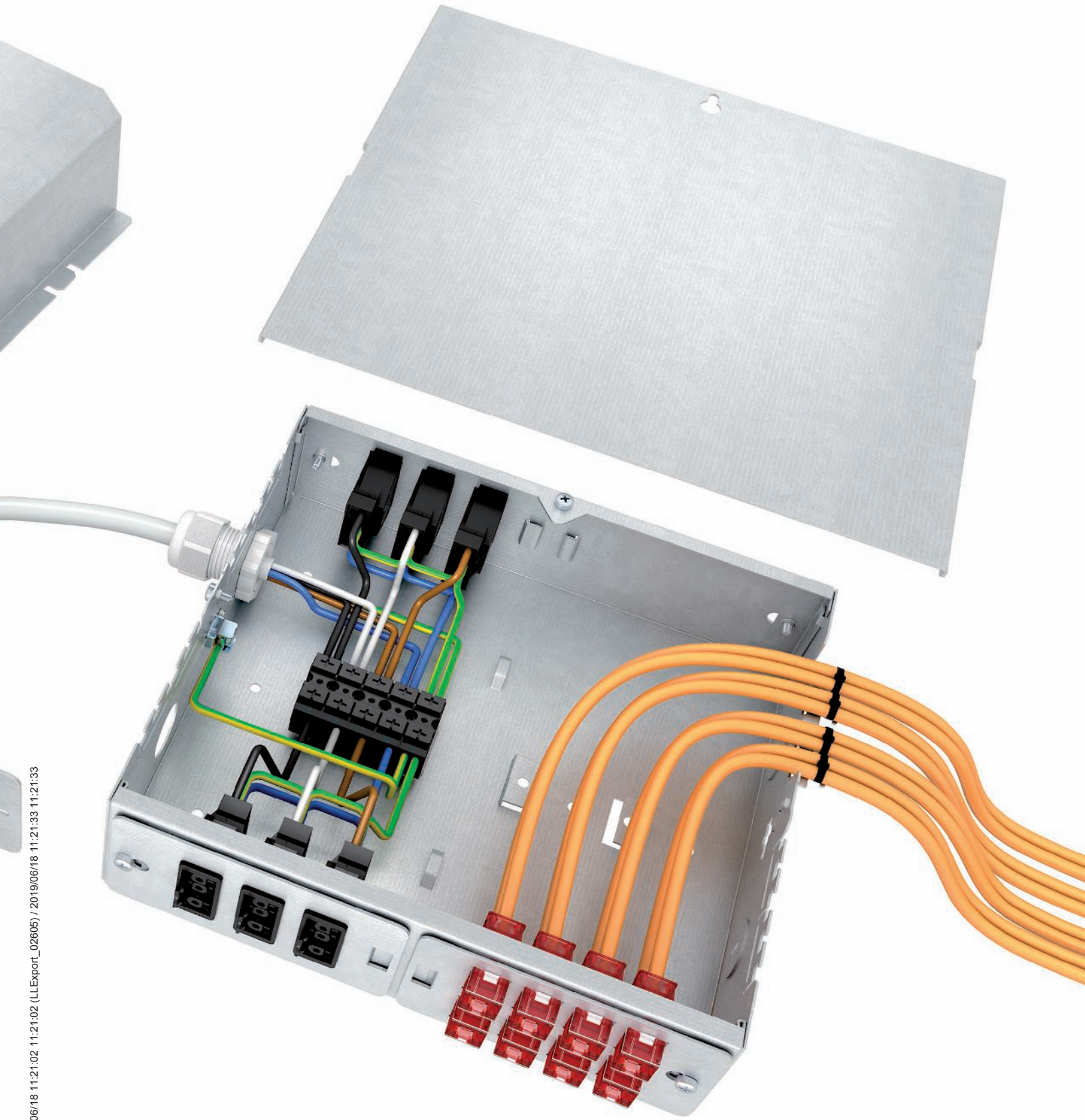


The electrical supply is possible via both the Modul 45 sockets and the plug connector systems. In the housing, cover hoods can be used to separate the different sockets and to separate the power and data technology.

Data and multimedia technology can be installed in the housing conventionally or with pre-terminated data cables.



07_EGS / en / 2019/06/18 11:21:02 (LLExpert_02605) / 2019/06/18 11:21:33 11:21:33



07_EGS / en / 2019/06/18 11:21:02 (LLExpert_02605) / 2019/06/18 11:21:33 11:21:33

Modul 45connect®

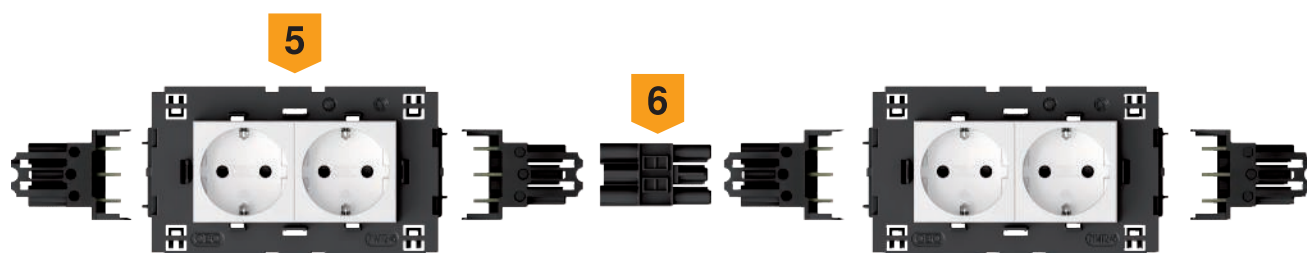
System components

1	Connector adapter GST18
2	0° socket for Rapid 45
3	Connection adapter sockets
4	Socket section adapter GST18
5	0° socket for Rapid 80
6	Connection adapter GST18
7	33° socket for service pole

Rapid 45

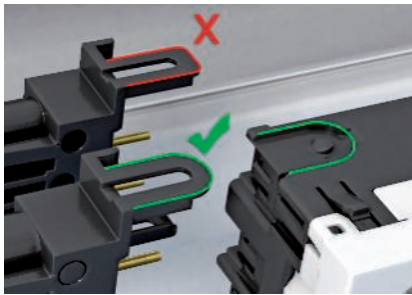


Rapid 80



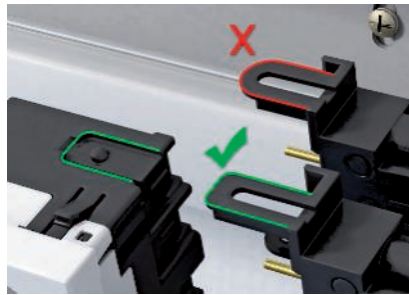
Rapid 45





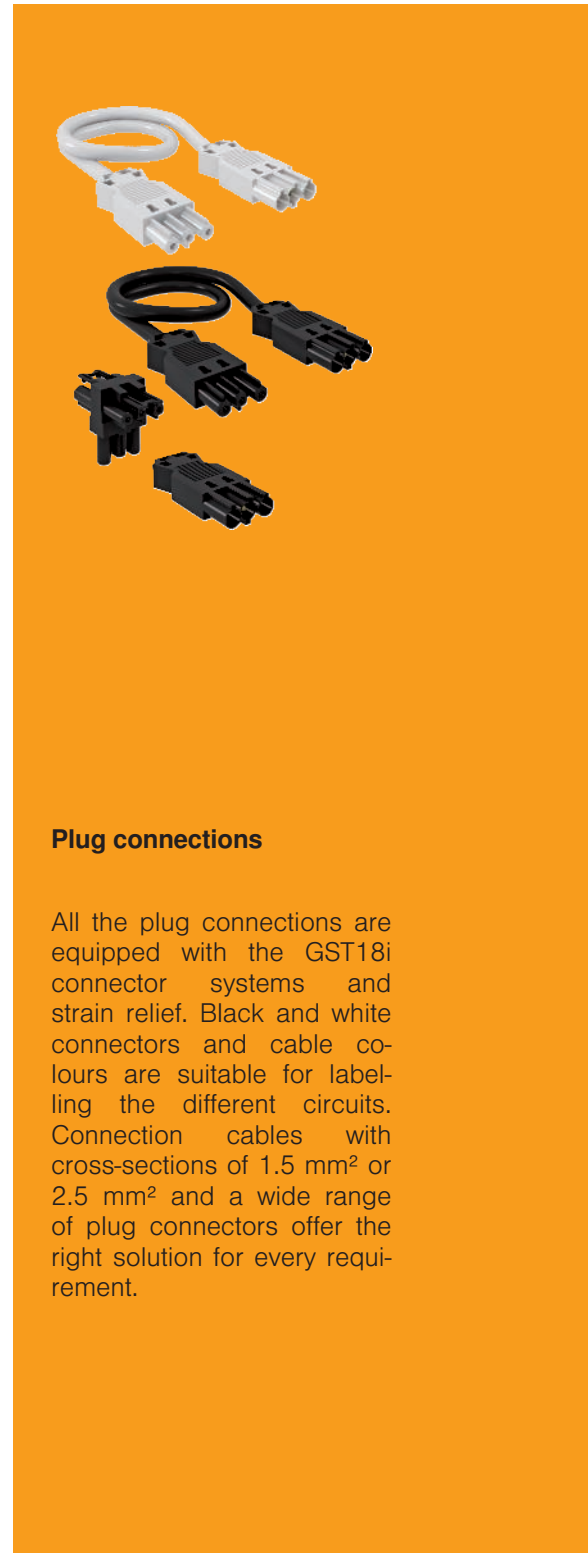
Encoding connector connection side

Before mounting the connector section adapter, check that the encoding matches with the socket. Each socket has a connector connection side.



Encoding socket connection side

Before mounting the socket section adapter, check that the encoding matches with the socket. Each socket has a socket connection side.



Plug connections

All the plug connections are equipped with the GST18i connector systems and strain relief. Black and white connectors and cable colours are suitable for labelling the different circuits. Connection cables with cross-sections of 1.5 mm² or 2.5 mm² and a wide range of plug connectors offer the right solution for every requirement.



Cost-aware

The efficient installation time and simple installation mean that the Modul 45connect sockets are a particularly economic solution.



Connection adapter GST18

The connection adapter VB-G GST 18 allows the arrangement of sockets in the Rapid 80 trunking system and in ISS service poles.

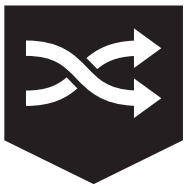


Modul 45connect® – plug-in installation solutions for raised and cavity floors

The Modul 45connect for underfloor systems is a continuous, connectable installation technology. This is designed for installation in a system floor. Modul 45connect offers the highest level of flexibility, security and cost efficiency.

The system offers all the required installation components: From energy distribution through to device connection in the floor box.

Raised floor
installation



Rapid and toolless installation through Modul 45connect



More safety through pre-terminated and tested systems



Simple reinstallation and the highest flexibility



Reduction of the fire load

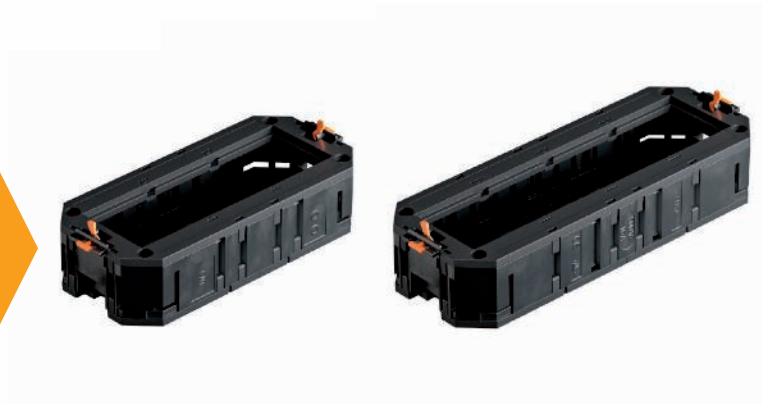


Cavity floor installation

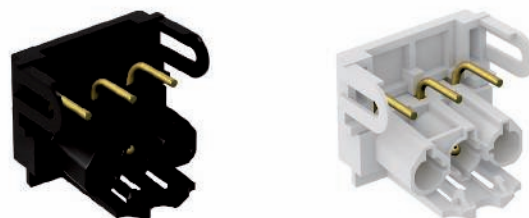
37_EGS / em / 2019/06/18 11:21:33 (LLExpof_02606) / 2019/06/18 11:21:33 11:21:33

Plug-in device installation solution for raised and cavity floors

Modul 45connect®
Universal supports + sockets



Modul 45connect®
Connection + adapter



Ready-for-connection
socket units

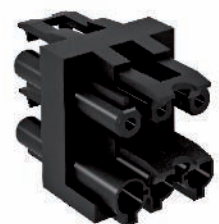
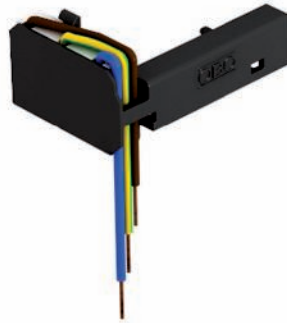
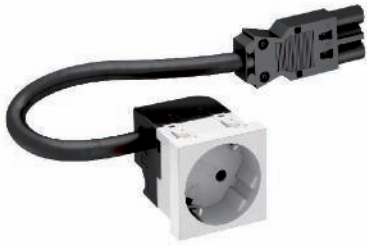


UVS energy distributors



Installation accessories
and connection cables





Plug-in connection unit

The ready-for-connection connect UTC universal supports are equipped with connectable connection adapters. The cables are connected directly to the underfloor distributors via connection cables.



Raised floor systems

Raised floor systems offer the highest flexibility in the use and planning of office workspaces. This flexibility can be used to the utmost through the use of plug-in connection solutions.

If there are changes of use, floor plates including the floor box can be adapted to the new room planning with little effort – disconnect the pre-terminated connection cable and connect it to the connection unit in the new position.

Energy distributor

Energy distributors are used in raised floors with removable floor plates. They are mounted at central points under the floor surfaces and supply the installed floor boxes in a star shape.





Service outlets

All the service outlets from the standard product range can be used in raised and cavity floors. The GES service outlets are available in round and rectangular versions. Plastic or metal are used as materials. The plastic version is the tried-and-trusted solution for office installations. It is available in three colour variants. The metallic stainless steel or aluminium versions look refined and can carry an even greater load.

Other solutions are available for areas with increased floor load requirements.



Ready-for-connection universal support connect UTC

The connect UTC universal supports can be ordered as a ready-for-connection unit or free-ly terminated according to customer requirements.

Combinations of up to two circuits are possible for each connection unit – also with surge protection.



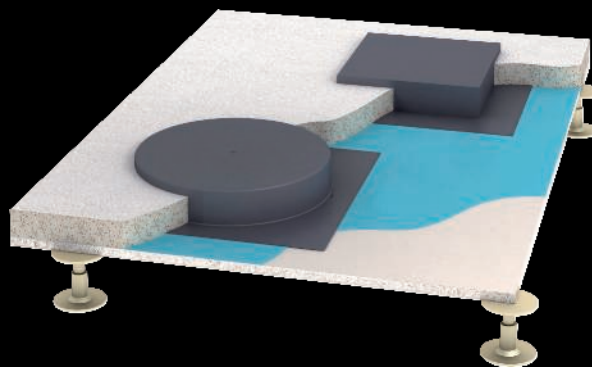


Connection in the floor box

The plug connections on the Modul 45connect sockets are located below the connection unit. This allows plug connections outside the floor box. The connected universal support is installed in the floor box by lowering it in the locking ladder. Fastening in the floor box is carried out using the sash locks in the locking ladder.

Cavity floors

Cavity floors have a support layer of a joint-free, poured screed plate. The installation opening for the installation of floor boxes can be created in two ways in the cavity floor: Either the installation opening is created with a lined body before the screed work or core drilling takes place after the screed work.



Cable routing

Beneath the screed plate, supply points for the installed floor boxes are set using energy distributors.





07_EGS / en / 2019/06/18 11:21:02 (LLExpert_02605) / 2019/06/18 11:21:33 11:21:33



Cassettes

The compact, flush-floor cassettes from Ackermann made by OBO offer power, data and multimedia connections in the smallest areas. The cassettes can be adjusted to the height of the floor and are available in round and rectangular designs. There are versions for dry, moist and wet-care floor coverings.

Installation benefits Modul 45connect®

Modul 45connect sockets can be mounted and connected with just a few actions. The GST18 adapters are engaged to the side of the sockets – incorrect installation is not possible due to the coding of the locking connections.

Connection adapter for 4x socket combination

The connection of Modul 45connect sockets is really easy: A plug connection is created using a connection adapter. There is no need for the otherwise necessary wiring work, considerably reducing the time required for mounting. This means that combinations of two double sockets in the UT4 universal support can be created rapidly.

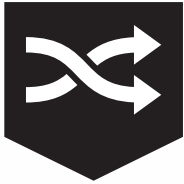
Connection adapter

An angled connection adapter with integrated strain relief is available especially for use in service outlets and cassettes. The connection adapter is available for the isolation of circuits in two colours (black and white).



Two circuits

Combinations with two power circuits with triple, double and single sockets in UT universal supports are possible. In addition, the use of surge protection modules is also possible on double and triple sockets.



Rapid and toolless installation through Modul 45connect



Safe installation through encoded connection technology



Direct mounting in the trunking – without additional components



Reduction of the fire load

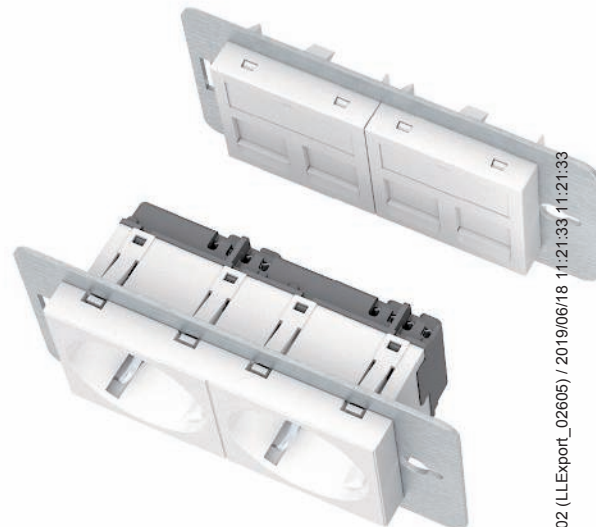


Consolidation Points offer a high level of flexibility and combination options for power, data and multimedia connections.

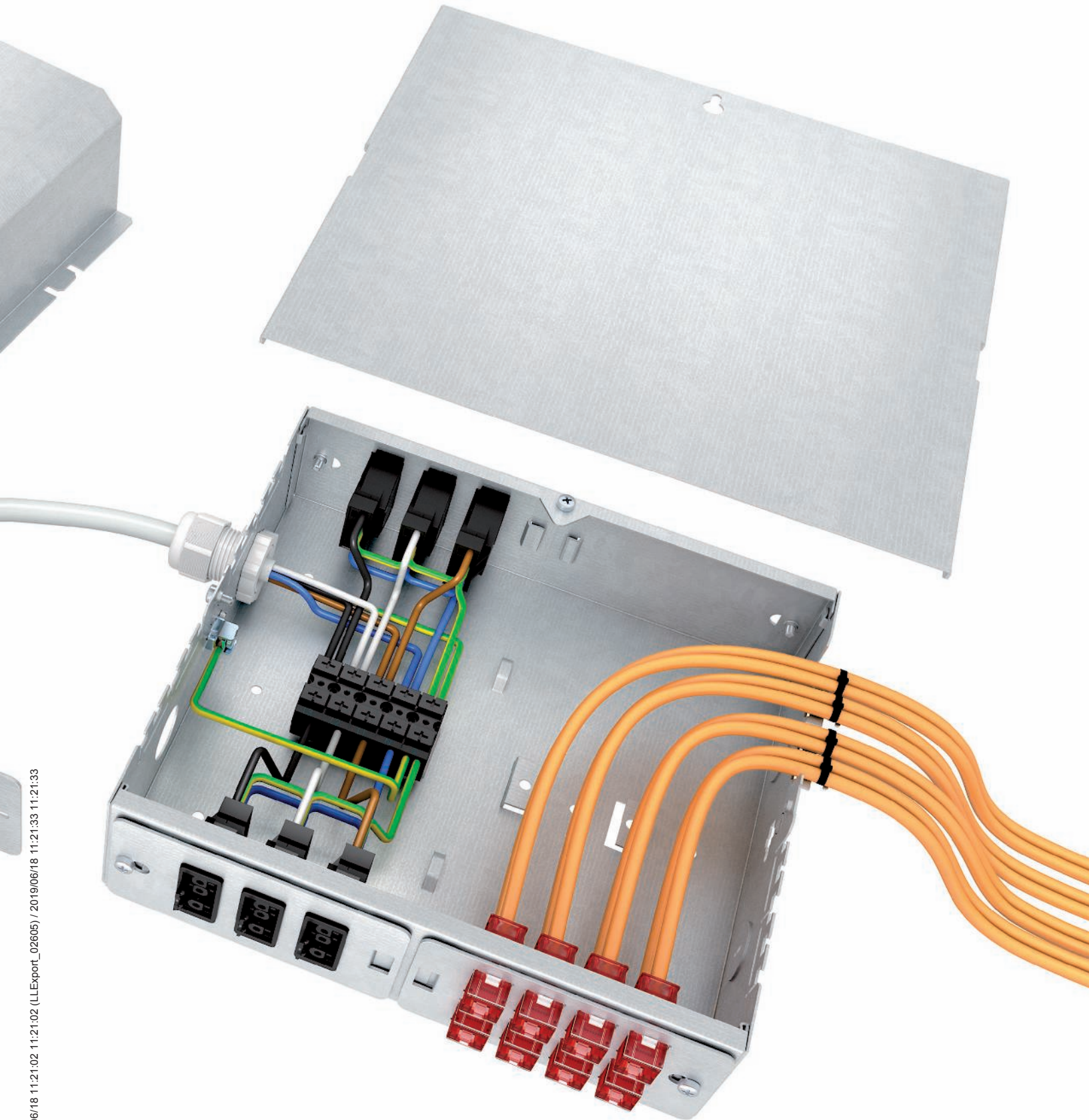


The electrical supply is possible via both the Modul 45 sockets and the plug connector systems. In the housing, cover hoods can be used to separate the different sockets and to separate the power and data technology.

Data and multimedia technology can be installed in the housing conventionally or with pre-terminated data cables.



07_EGS / en / 2019/06/18 11:21:02 11:21:02 (LLExpert_02605) / 2019/06/18 11:21:33 11:21:33



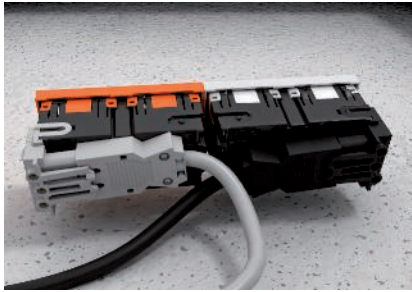
07_EGS / en / 2019/06/18 11:21:02 (LLExpert_02605) / 2019/06/18 11:21:33 11:21:33

Modular structure

System components

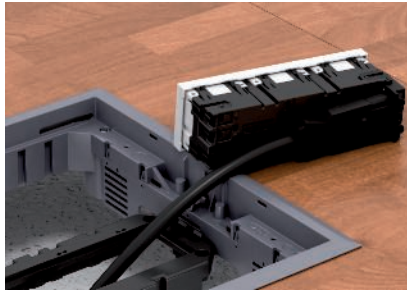
1	Universal supports
2	Modul 45connect connector part adapter
3	Protective contact socket
4	Modul 45connect connector





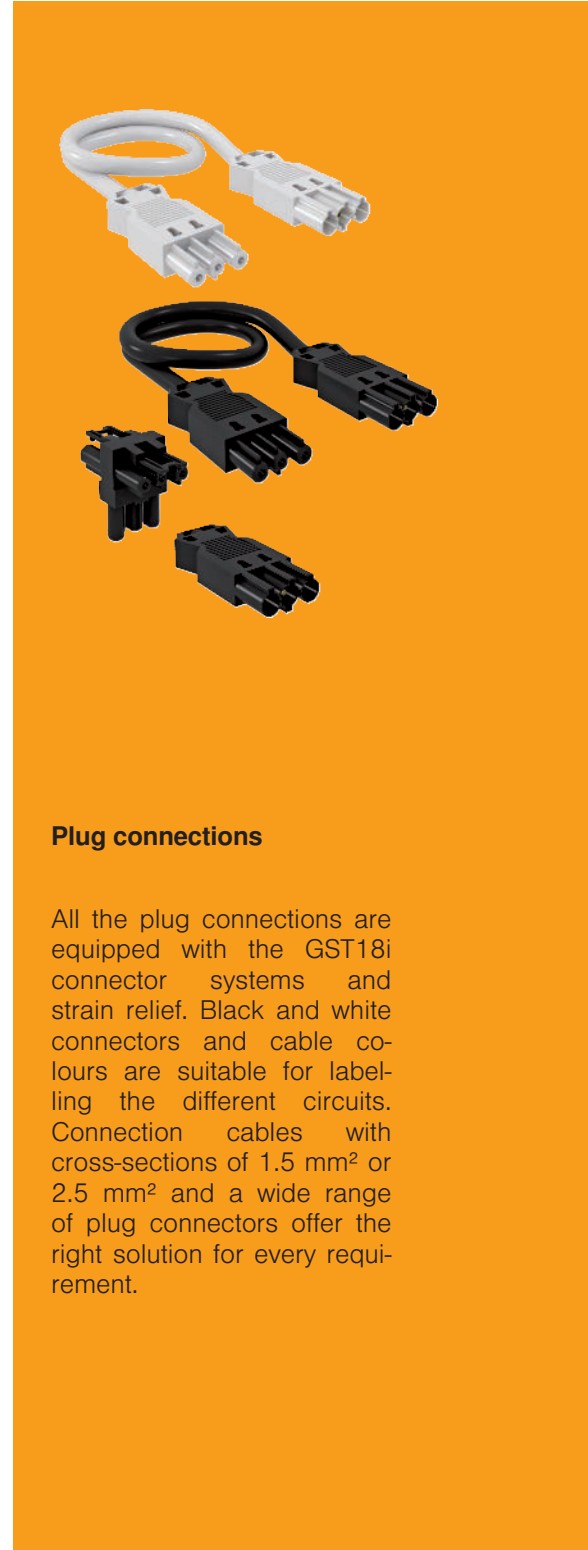
Safe

The Modul 45connect system is ideally suited for use in raised floors. Ready-for-connection module supports need only be connected to the heavy current cabling.



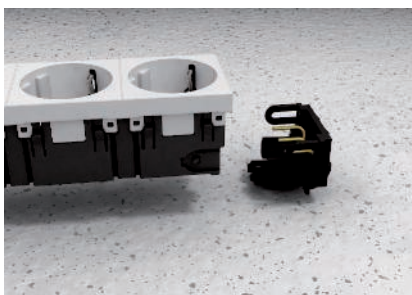
Cost-aware

The Modul 45connect system makes lengthy manual cabling work a thing of the past. All the connections can be created simply, quickly and safely using terminated components.



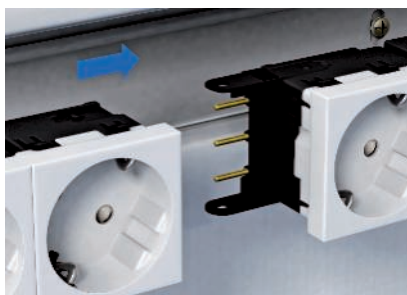
Plug connections

All the plug connections are equipped with the GST18i connector systems and strain relief. Black and white connectors and cable colours are suitable for labelling the different circuits. Connection cables with cross-sections of 1.5 mm² or 2.5 mm² and a wide range of plug connectors offer the right solution for every requirement.



Connection adapters

The connection adapters can be connected to the socket outside the universal support. The socket unit with connection adapter is then engaged in the universal support.



Connection adapter, socket

Modul 45connect sockets can be connected with a connection adapter. The simple plug connection removes the wiring work.



Workplace solutions – Deskboxes and Flexkanal

Deskboxes by OBO offer direct access to power, data and multimedia connections for any workplace and in offices and meeting and conference rooms. For individual requirements, 3 different Deskbox solutions are available in high-quality materials and elegant designs:

- Freely locatable Deskbox DB
- Lowerable Deskbox DBV
- Foldable Deskbox DBK

Freely locatable
Deskbox DB

Lowerable Deskbox
DBV



Foldable Deskbox
DBK

27_EGS/em/2019/06/18-5-59-52-13-55-52-11-Expon-12-05/2019/06-18-27-01-11-21-24



Very flexible. The DB Deskbox

High-quality aluminium, slim design and variable installation options. The Deskbox DB can be freely positioned in the workstation and offers direct access to all connection solutions.

A great package. The foldable Deskbox DBK

At workplaces or conference tables – the range of applications of the foldable Deskbox DBK is huge. No matter whether for laptops, bea-
mers or PCs, connection is as easy as you'd expect. Open the cover, put the plug in, then close the cover. The integrated brush bar allows
tidy running out of the cables.



Gone in a flash. The lowerable Deskbox DBV

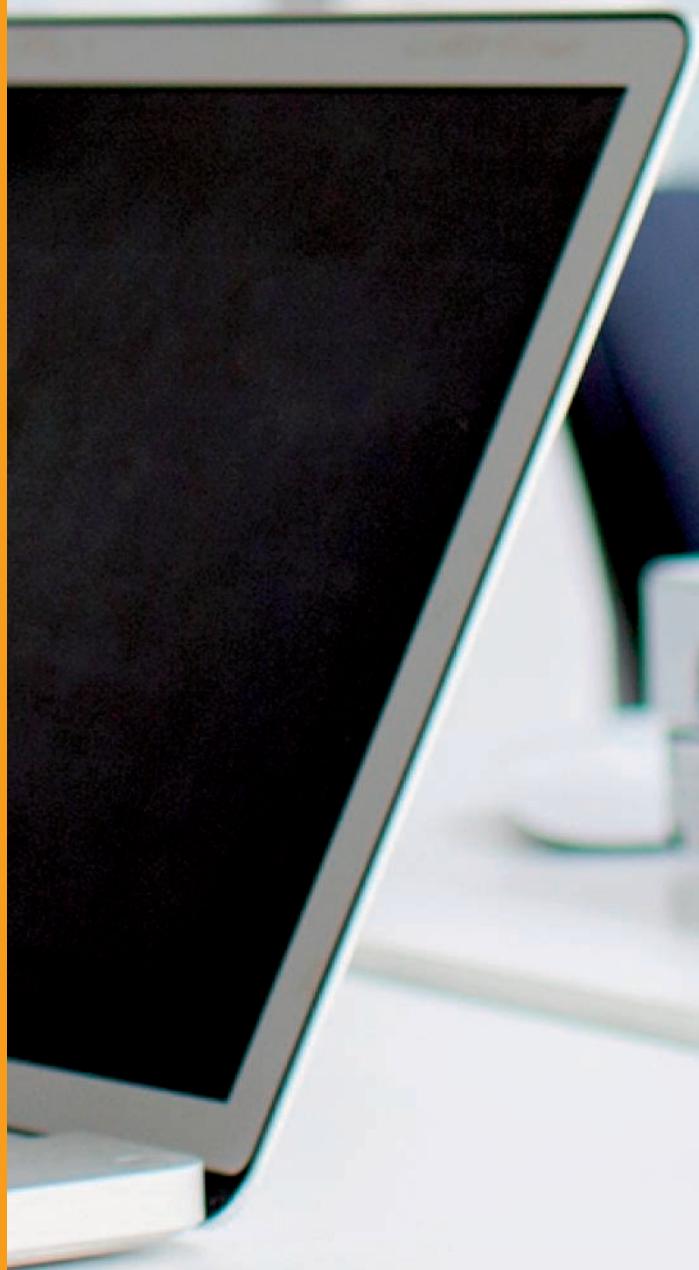
Power and data simply vanish into the recess. If necessary, the Deskbox DBV can simply be pulled out – the plug connections are then easy to reach.

Very flexible. The DB Deskbox

The aluminium housings of the DB Deskboxes with silver-coloured, anodised surfaces impress with their compact construction and elegant design.

They offer the right connection solutions for all areas of application: 1–2 circuits, network connections and multimedia connections for TVs and beamers for meeting rooms are available.

Other variants of the Deskboxes are available on request.



Versatile

The DB Deskboxes allow comfortable and easy access to all connection devices directly at the workplace.

A large selection of preequipped and ready-for-connection Deskboxes are available.



The erectable type DB Deskbox offers the highest level of flexibility in positioning and fastening at the workplace.

Fastening clamps allow quick and easy mounting of the Deskboxes to the tabletop, with the benefit being that there is no damage to the tabletop, e.g. from fastening holes or through wood screws.

Additional fastening options for fixed mounting on or under the tabletop are available as accessories.

Gone in a flash. The lowerable Deskbox DBV

The lowerable DBV Deskbox offers the largest possible connection solutions in the smallest space.

The covers visible in the tabletop are available painted silver or in high-quality stainless steel. Other variants of the Deskboxes are available on request.



Housing variants

Surfaces

The Deskbox DBV is supplied as standard with the surface in anodised silver. The following variants are available on request:

- Coloured as old brass
- Chrome-plated
- Black anodised

Cover variants

The standard cover is made of plastic and is painted silver or is solid stainless steel. On request, you can also obtain it in

- Plastic, painted black
- Steel, chrome-plated
- Coloured as old brass



07_EGS/en/2019/06/18/11:21:02_11:21:02_LL.Export_02805/2019/06/18/11:21:33_11:21:33

The DBV is installed in a drill hole in the tabletop. This allows the construction technology to disappear discreetly under the tabletop.



For this, a matching circular band saw is offered as the mounting tool.

A great package. The foldable Deskbox DBK

If necessary, the Deskbox DBK is simply folded up – using the push-to-open function: The connection devices are then easily accessible.

The inserted cables are run out of the closed Deskbox via the integrated brush bars.



The inserted cables are run out of the closed Deskbox via the integrated brush bars.

They offer the right connection solutions for all areas of application: 1–2 circuits, network connections and multimedia connections for TVs and beamers for meeting rooms are available.

Other variants of the Deskboxes are available on request.



Device installation widths

The Deskbox DBK is available in four widths. This results in the following device installation widths for equipment:

- 150 mm
- 200 mm
- 250 mm
- 300 mm

Surface variants

The DBK Deskbox is supplied as standard with the surface brushed stainless steel. The following variants are available on request:

- Painted black
- Pure white lacquered



Configure an individual Deskbox in 5 steps

Configure a Deskbox according to your requirements. For quantities over 5 units per version, we can produce a tested, ready-for-connection Deskbox according to your specifications.

1

Select Deskbox design



DB Deskbox

2

Select housing colour

Standard design

Silver anodised

On request

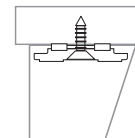
Powder-coated

3

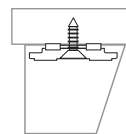
Fastening



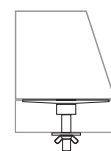
Stainless steel fastening stand



Free erection without fastening



Fastening set for under-table mounting



Fastening set for table mounting



Fastening clamp



DBV Deskbox



DBK Deskbox

Standard design

Body

- Silver anodised

Cover

- Painted silver
- Stainless steel, solid

Standard design

- Stainless steel, brushed

On request

Body

- Black anodised
- Old brass anodised

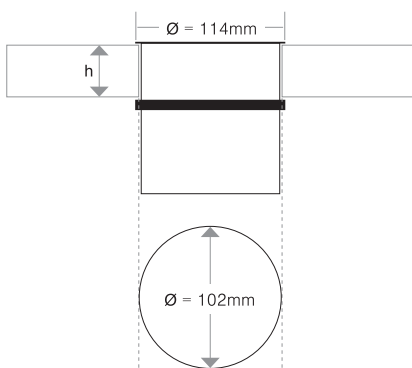
Cover

- Painted black RAL 9005
- Painted as old brass
- Painted white RAL 9010

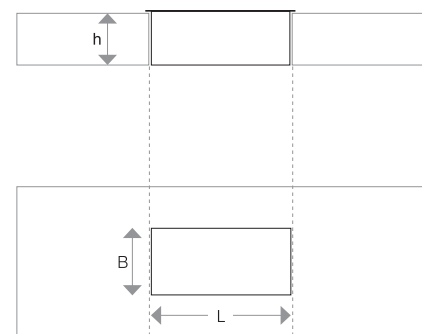
On request

- Painted black RAL 9005
- Painted white RAL 9010

**Installation opening in the tabletop
(Plate thickness max. 50 mm)**



**Installation opening in the tabletop
(Plate thickness max. 50 mm)**



Configure an individual Deskbox in 5 steps

4

Select the energy technology equipment

Checklist

Select connection solution

- Specify socket type and quantity
- Specify power circuits and additional function

Select the connection type

- Protective contact connector
- Wieland GST18 connector
- Wago Winsta connector
- Without connector, with wire end sleeves
- Country-specific connector (on request)

Select cable lengths

- 3 m cable with connector (standard)
- 5 m cable with connector
- Special lengths (on request)



Protective contact

Protective contact

Denmark

Denmark, IT



Earthing pin

Earthing pin

Switzerland 10 A

USA/Canada

5

Select the data/multimedia technology equipment

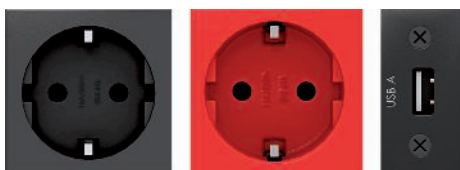
Checklist

Select connection solution

- Specify connection type and quantity

Select the connection type

- Short cable with socket
- 3 m cable with connector
- 5 m cable with connector (on request)



Protective contact

Protective contact

USB charging device



RJ45 Coupling Cat. 6

RJ45 Coupling Cat. 6



China



Australia



One-way switch



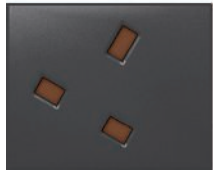
Switzerland 10 A



Australia



British Standard, with fuse



British Standard



Wieland GST18



USB charging device



Switch



LS switch



FI switch



DVI



VGA



VGA + Cinch 3.5 mm



Cinch 3.5 mm



USB 2.0/3.0



HDMI



RJ45 Coupling Cat. 6



RJ45 Coupling Cat. 6A



RJ45 Socket Cat. 6



RJ45 Socket Cat. 6A



RJ45 Socket Cat. 7



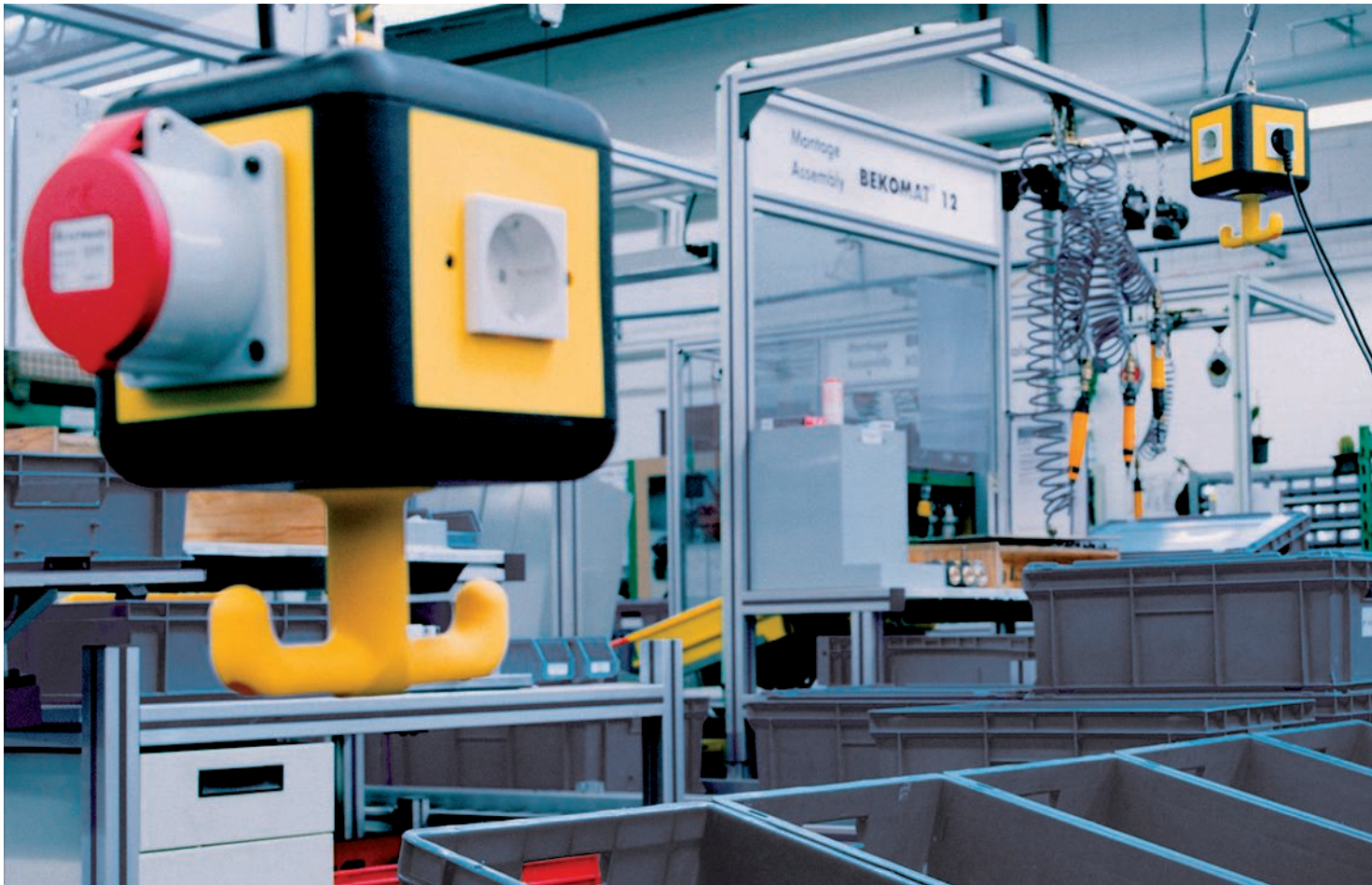


Modul 45® and standard – Suspended power supply units VH / VHF

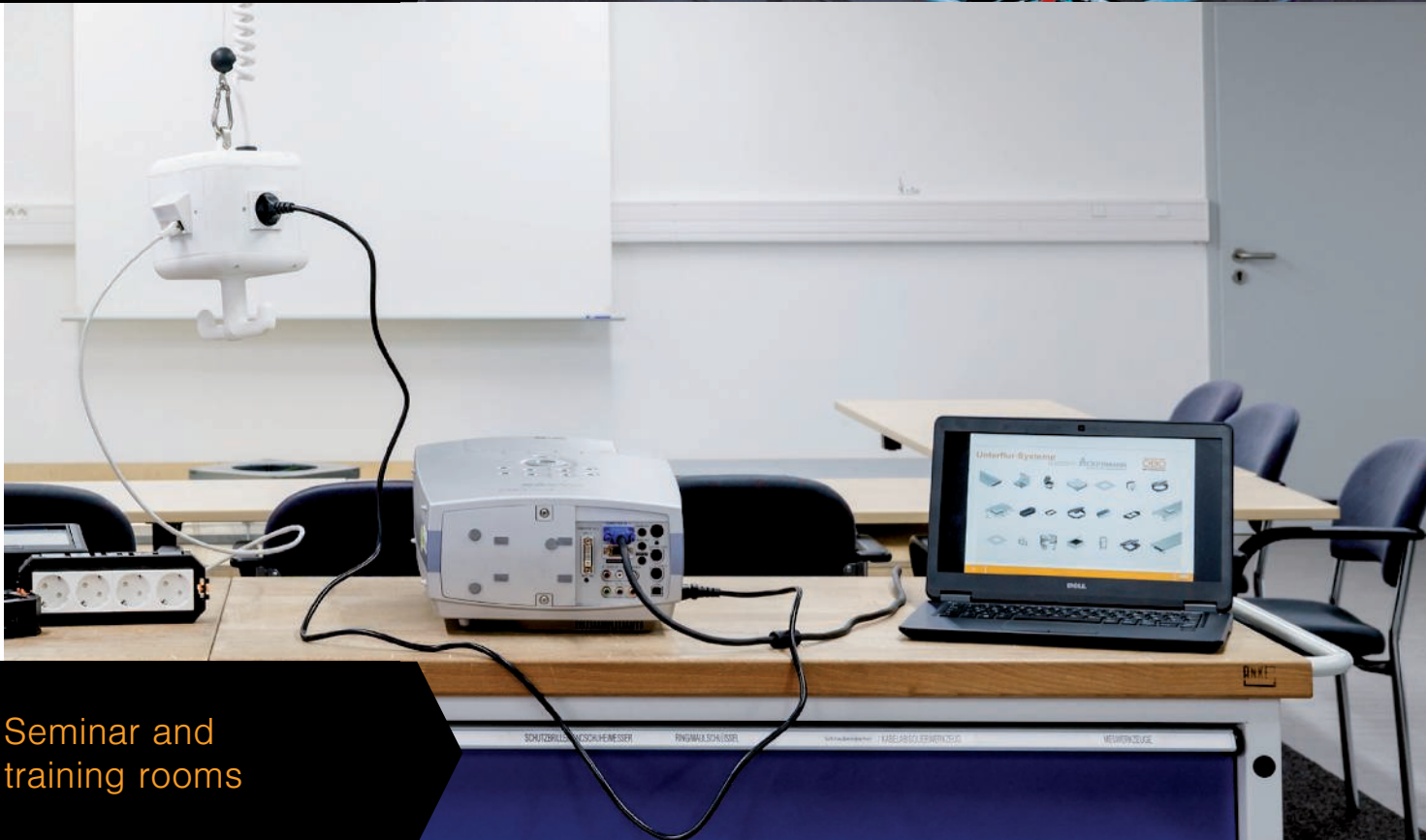
Suspended energy distributors for workplaces and machines in industry, the trades and in training areas. The power supply units can be positioned freely in the room. The supply comes from the ceiling. They can be equipped flexibly from power, data and media technology through to work media such as compressed air.



Workshops and
work areas



Industrial and mounting workstations



Seminar and training rooms

17_EGS / em / 2019/06/18 11:21:02 (LLExpert_02606) / 2019/06/18 11:21:33 11:21:33

Robust and trusted

The housings of the power supply units are made of highly resistant polyamide and offer installation space for 4 to 8 installation devices. This means that power supply units provide connections for work media directly and safely at the workplace.



Modul 45® sockets



CEE connection units



Compressed air



Modul data and multimedia technology



07_ESSY/1809/2019/06/18 11:21:02 (LLExpert_02605) / 2019/06/18 11:21:33 11:21:33



Standardised installation

Cables are inserted in the VH via penetration sleeves. Integrated strain relief options in the housing ensure standardised installation. The suspension of the power supply units takes place in a fixed manner with a chain, with a spring or ergonomically with the positioner.



Modul 45 sockets

Up to two Modul45 sockets can be installed on each connection side of the power supply unit. Different circuits can be installed in the housing. The entire product range of the international sockets is available.



CEE connection unit

CEE 16 A and CEE 32 A sockets can be installed in the power supply units.

07_EGS / en / 2019/06/18 11:21:02 (LLEExport_02606) / 2019/06/18 11:21:33 11:21:33



Power supply unit with increased IP protection

The VHF8 power supply unit is specially designed for use in moist and wet areas. In the unused state, the housing equipment and the devices offer a protection level of IP44 (protected against spray water).

Through the installation of up to 4-pole protection devices, workstations can be protected appropriately and in a decentralised manner.



Compressed air

The compressed air connection at the power supply unit is designed for compressed air hoses 13 x 3.5 mm. The hose connection is fixed and locked using a hose clip. The power supply unit is equipped with a 2-way distributor 1/2".





Variant

In seminar and training rooms, the power supply unit in pure white can be used for a more discreet appearance.



Data technology and multimedia

The entire Modul 45 programme of data and multimedia technology is available for the network connection of machines and systems and in seminar and training rooms.

Suspension of the unit



Up to 30 cm



Up to 150 cm



Chain

The suspension of the power supply units can be carried out in a fixed manner with a chain to supply machines or systems.

Chain + spring

Suspension using a tension spring allows improved access to the connections. The unit can be pulled down to 30 cm.

Positioner

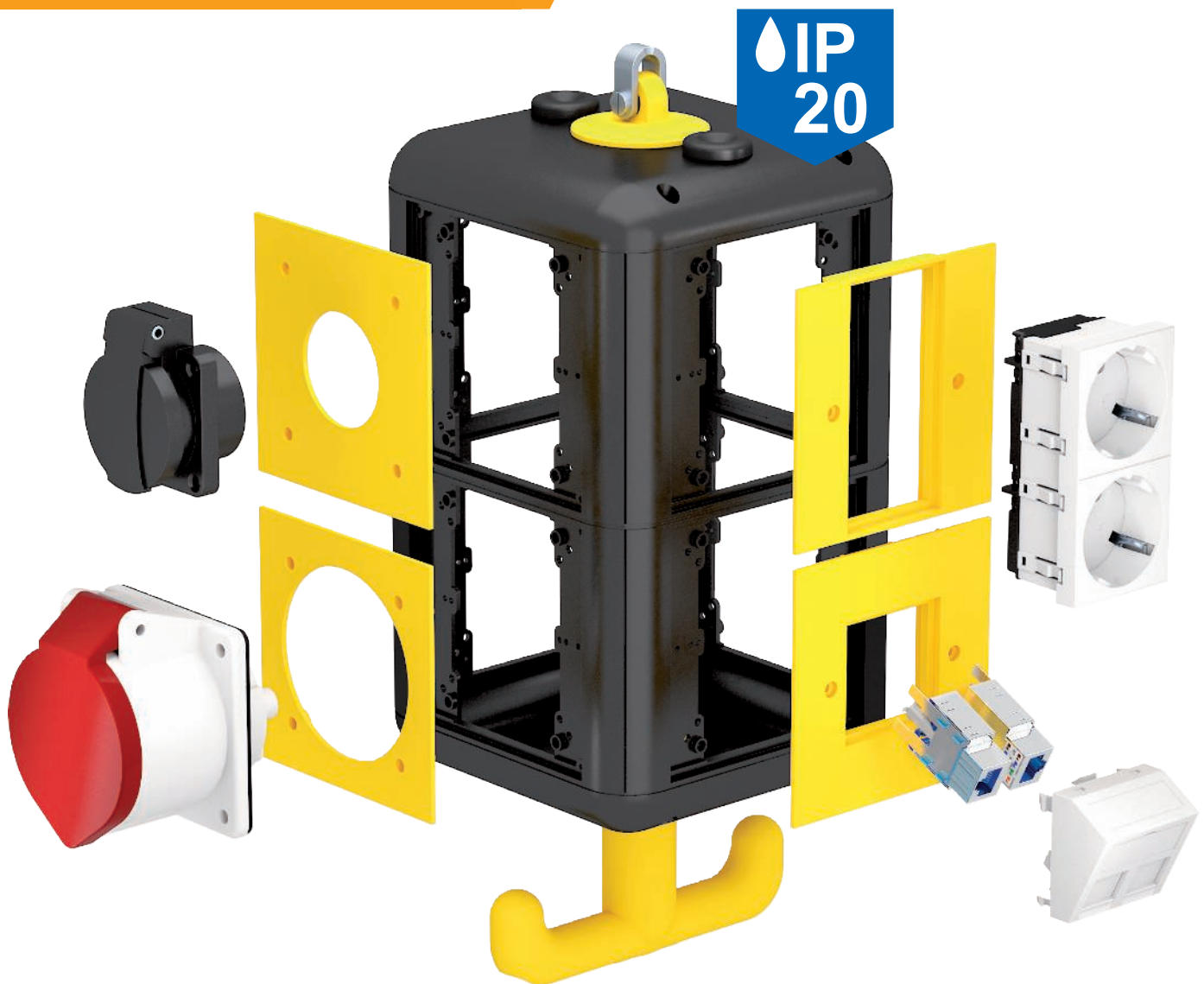
In addition, the power supply unit can be suspended ergonomically via the height-adjustable positioner. The positioner offers a height adjustment range of up to 1.5 m.

Pre-terminated power supply units

For a quick and easy ordering process, pre-terminated power supply units are available for standard applications, with and without compressed air connections. The sockets are already pre-wired and tested in the housing. The cable connection is quick and easy and uses prepared screw terminals.



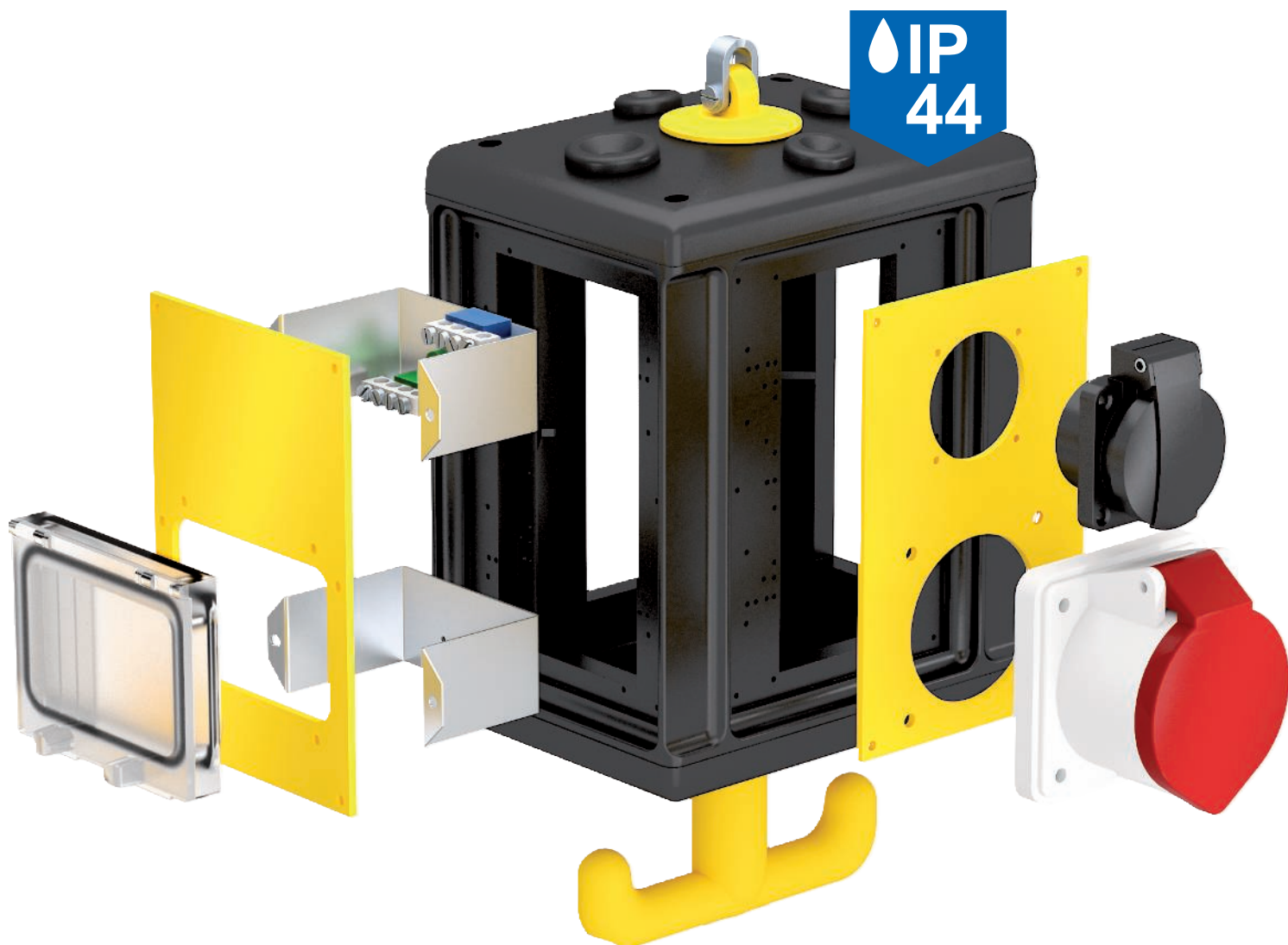
VH and VHF empty housing –
freely configurable



Equipment for VH4 and VH8

The VHF power supply units are available as an empty housing for 4 (type VH4) or 8 (type VH8) connection sides for installation devices. The empty housings are offered with and without compressed air connections.

The standardised cover plates can be used in the VH4 and VH8 and allow the installation of Modul 45 devices, extension sockets with hinged lids, standard installation devices (with 50 mm central plate) and CEE connection units.



Equipment for VHF

The VHF power supply units are available as an empty housings for 8 installation devices. The empty housing are offered in versions with and without compressed air connections.



Special cover plates for increased IP protection are available for the VHF. The cover plates for VHF allow the installation of extension sockets with hinged lids, CEE connection units and decentral protection devices.

Test marks


	STOWARZYSZENIE ELEKTRYKÓW POLSKICH, Poland
	KEMA-KEUR, Netherlands
	Österreichischer Verband für Elektrotechnik, Austria
	Verband der Elektrotechnik, Elektronik, Informationstechnik e.V., Germany

Pictogram explanation



Surfaces

 FS	Strip-galvanised
 EL	Anodised






Conformity symbol

	Communautés Européennes, EC declaration of conformity according to EC directives
---	--




Quality marks

	Halogen-free; without chlorine, fluorine and bromine
	UV-RESISTANT







Specific product symbols

	Diameter 60 mm
	Diameter 68 mm
	Protection device to DIN EN 61643-11 or IEC 61643-11
	Transition from LPZ 2 to LPZ 3
	Acoustic signalling

Metals

 Alu	Aluminium
 VA	Stainless steel, grade 304
 St	Steel

Plastics

 PA	Polyamide
 PC	Polycarbonate
 PE	Polyethylene
 PP	Polypropylene
 PS	Polystyrene
 PVC	Polyvinylchloride

OBO Bettermann Holding GmbH & Co. KG
P.O. Box 1120
58694 Menden
GERMANY

Customer Service
Tel.: +49 23 73 89 - 17 00
Fax: +49 23 73 89 - 12 38
export@obo.de

www.obo-bettermann.com

Building Connections

